

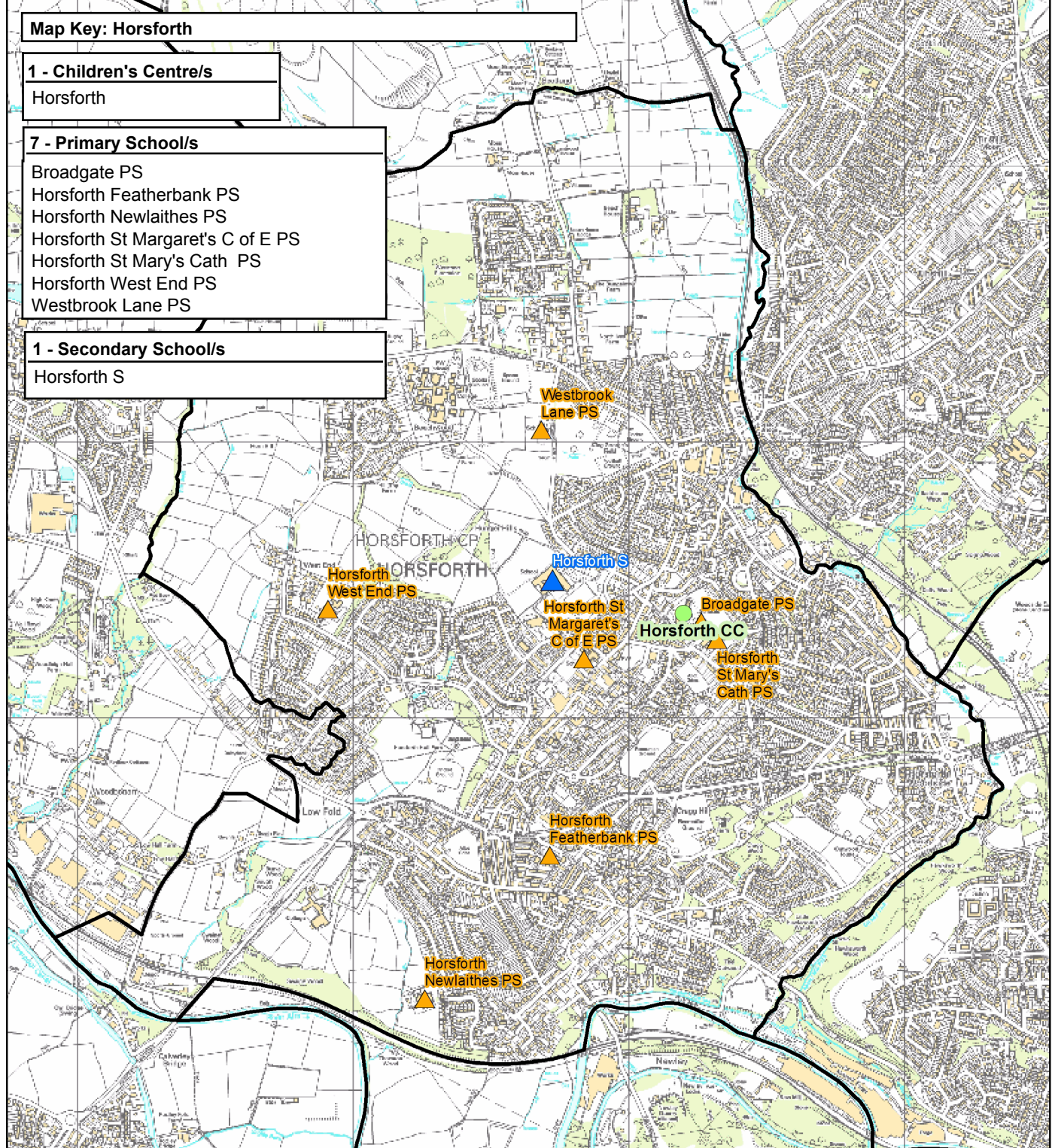
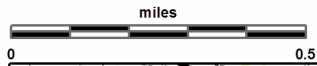
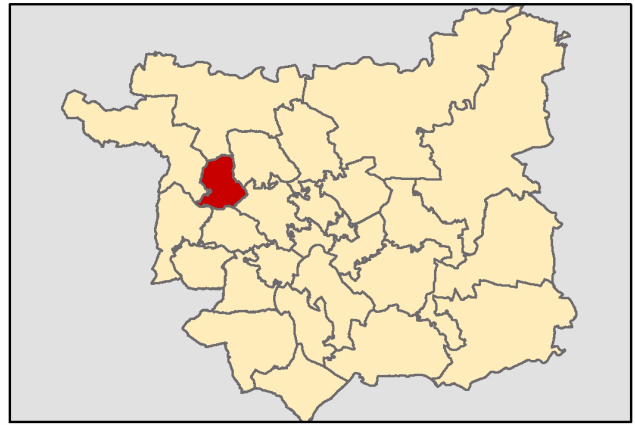
Horsforth

This report was produced by the Children's Performance Service on 01/06/2012. The information in these overviews are based on the cluster data profile version 5.12.

For more information telephone 0113 39 50701 or email educ.pmi@leeds.gov.uk or visit:

www.leedsinitiative.org/ClusterDataProfile.aspx

The map to the right gives the position of the cluster in Leeds. The map below shows the location of the Children's Centres, Primary and Secondary Schools in the cluster.



Cluster Overviews key**Data Period:**

The codes in the key to the right are for the time periods that the data in these reports cover. They will appear next to all data sets.

Academic Year
Calendar Year
Financial Year
Snapshot
Other

DP:A
DP:C
DP:F
DP:S
DP:O

Cluster Overview

| Data Source: January School Census | | | | | DP: S | Data Source: January School Census | | | | | DP: S |
|---|------|----------------------|-------------|-------------|-------|------------------------------------|------|----------------------|-------------|-------------|-------|
| Primary Schools | DFE | Total Number on roll | | | | Secondary Schools | DFE | Total Number on roll | | | |
| | | 2010 | 2011 | 2012 | | | | 2010 | 2011 | 2012 | |
| Broadgate Primary School | 2398 | 239 | 243 | 254 | | Horsforth School | 4115 | 1388 | 1374 | 1392 | |
| Horsforth Featherbank Primary School | 2283 | 177 | 179 | 165 | | Total | | 1388 | 1374 | 1392 | |
| Horsforth Newlaithes Primary | 2363 | 180 | 195 | 268 | | | | | | | |
| Horsforth St Margaret's C of E Primary School | 3038 | 403 | 404 | 416 | | | | | | | |
| Horsforth West End Primary School | 2334 | 258 | 247 | 257 | | | | | | | |
| St Mary's Catholic PS | 3359 | 211 | 206 | 211 | | | | | | | |
| Westbrook Lane Primary School | 2364 | 206 | 212 | 214 | | | | | | | |
| Total | | 1674 | 1686 | 1785 | | | | | | | |

| Data Source: Children's Services - Feb 2012 | | DP: S |
|---|--|--------------|
| Children's Centre reach area registration for families of children aged 0-5 | | % Registered |
| Cluster | | 66.82 |
| Wedge | | 53.88 |
| Leeds all | | 60.23 |

| Data Source: Children's Services | |
|----------------------------------|-----------|
| Children's Centre | Ofsted ID |
| Horsforth | |

| Data Source: The office of National Statistics population mid-year estimates | | | | | | | | | DP: S |
|--|--------|--------|--------|-------------|--------|--------|--------|--------|--------|
| Population Estimates | 0-15 | | | Working Age | | | 60/65+ | | |
| | 2008 | 2009 | 2010 | 2008 | 2009 | 2010 | 2008 | 2009 | 2010 |
| Cluster | 2998 | 2973 | 2997 | 12218 | 12350 | 12382 | 3857 | 3953 | 3986 |
| Wedge | 44108 | 44366 | 44774 | 207876 | 208717 | 211509 | 47163 | 47875 | 48413 |
| Leeds all | 132741 | 133396 | 134493 | 516578 | 522769 | 531036 | 129937 | 131536 | 133240 |

| Data Source: NHS Leeds | | | | | | | | | | | | DP: S |
|------------------------|----------------|------|------|------|------|-------|----------------|-------|------|------|------|-------|
| Under Fives | September 2010 | | | | | | September 2011 | | | | | |
| | 0-1 | 1-2 | 2-3 | 3-4 | 4-5 | Total | 0-1 | 1-2 | 2-3 | 3-4 | 4-5 | Total |
| Cluster | 245 | 178 | 206 | 197 | 203 | 1029 | 228 | 237 | 183 | 207 | 209 | 1064 |
| Wedge | 3318 | 3278 | 3014 | 3023 | 2870 | 15503 | 3376 | 3315 | 3236 | 3035 | 3102 | 16064 |
| Leeds all | 10202 | 9848 | 9478 | 9195 | 9113 | 47836 | 9996 | 10173 | 9787 | 9438 | 9319 | 48713 |

| Data Source: January School Census | | | | | | | | | | | | DP: S |
|------------------------------------|---------------------------|-------------|-------------|-----------------------------------|-------------|-------------|---------------------------|-------------|-------------|-------------------------|-------------|-------------|
| Percentage of pupils who are: | Black and Minority Ethnic | | | English as an Additional Language | | | Free School Meal Eligible | | | Special Education Needs | | |
| | 2010 | 2011 | 2012 | 2010 | 2011 | 2012 | 2010 | 2011 | 2012 | 2010 | 2011 | 2012 |
| Primary | | | | | | | | | | | | |
| Cluster school | 9.0 | 9.7 | 9.6 | 4.4 | 4.5 | 4.6 | 6.4 | 7.6 | 8.1 | 8.8 | 9.0 | 10.4 |
| Cluster residence | 9.0 | 8.7 | 8.6 | 3.7 | 3.4 | 3.6 | 6.6 | 7.6 | 8.1 | 9.3 | 9.3 | 10.9 |
| Wedge school | 19.3 | 20.7 | 22.2 | 13.3 | 14.0 | 14.3 | 18.7 | 19.7 | 19.4 | 15.1 | 15.3 | 15.6 |
| Total primary | 23.6 | 24.8 | 26.4 | 15.8 | 16.5 | 17.1 | 21.5 | 22.2 | 22.0 | 17.8 | 17.8 | 17.4 |
| Secondary | | | | | | | | | | | | |
| Cluster school | 7.6 | 7.9 | 9.5 | 4.6 | 4.7 | 5.3 | 9.2 | 9.2 | 7.3 | 11.4 | 12.1 | 8.1 |
| Cluster residence | 6.5 | 6.9 | 8.0 | 3.5 | 3.9 | 4.0 | 8.4 | 8.4 | 7.1 | 12.3 | 12.1 | 8.7 |
| Wedge school | 15.7 | 16.1 | 16.7 | 9.6 | 9.8 | 10.2 | 16.0 | 16.3 | 16.5 | 19.2 | 17.8 | 14.6 |
| Total secondary | 18.6 | 19.4 | 20.4 | 10.4 | 10.0 | 11.1 | 19.0 | 19.4 | 19.5 | 21.4 | 20.4 | 19.0 |
| Leeds all | 21.4 | 22.5 | 23.9 | 13.4 | 13.7 | 14.6 | 20.6 | 21.1 | 21.1 | 20.0 | 19.6 | 18.7 |

| Data Source: HM Revenue and Customs - taken on 31st August 2007-2009 | | | | | | | | | | DP: S |
|---|---|-------------|-------------|---|-------------|-------------|---|-------------|--------------|--------------|
| Child Poverty | Number of children (under 16) in families in receipt of CTC or IS/JSA | | | Number of children (all ages) in families in receipt of CTC or IS/JSA | | | Number of children in poverty, by age of youngest child, 2009 | | | |
| | 2007 | 2008 | 2009 | 2007 | 2008 | 2009 | 0-4 | 5-10 | 11-15 | 16-19 |
| Cluster | 265 | 290 | 300 | 305 | 325 | 325 | 165 | 90 | 60 | 10 |
| Wedge | 8010 | 7990 | 8415 | 8935 | 8950 | 9465 | 4915 | 2700 | 1460 | 390 |
| Leeds all | 30235 | 29700 | 31030 | 33690 | 33300 | 34965 | 18720 | 9640 | 5115 | 1490 |

| Data Source: Children's Services - Summer Term 2011 | | | | | DP: S | |
|--|-----------------------------|--|-------|--|-----------------|---------------------|
| Nursery Education Grant Claims | Number of eligible children | Number of: Claims by childcare setting | | | Resident Claims | Non Resident Claims |
| | | | | | | |
| Cluster | 299 | | 425 | | 251 | 174 |
| Leeds all | 14500 | | 13851 | | 9704 | 4148 |

| Data Source: January School Census and 2010 Index of Multiple Deprivation | | | | | | | | | | DP: S |
|--|---|------------------|------------|------------|-------------------|-------------|-------------|-------------------|-------------|--------------|
| IMD | % of pupils resident in most deprived areas | 3% most deprived | | | 10% most deprived | | | 20% most deprived | | |
| | | 10 | 11 | 12 | 10 | 11 | 12 | 10 | 11 | 12 |
| Primary | | | | | | | | | | |
| Cluster school | | 0.0 | 0.9 | 0.7 | 1.7 | 3.4 | 3.2 | 5.7 | 7.3 | 6.6 |
| Cluster residence | | 0.0 | 0.0 | 0.0 | 0.0 | 0.0 | 0.0 | 0.0 | 0.0 | 0.0 |
| Wedge school | | 1.5 | 2.8 | 2.5 | 15.6 | 15.0 | 15.1 | 26.8 | 27.6 | 27.8 |
| Total primary | | 8.2 | 8.4 | 8.3 | 28.1 | 27.1 | 27.3 | 36.6 | 37.6 | 38.0 |
| Secondary | | | | | | | | | | |
| Cluster school | | 0.1 | 0.7 | 0.8 | 1.1 | 4.0 | 3.9 | 5.5 | 8.3 | 8.3 |
| Cluster residence | | 0.0 | 0.0 | 0.0 | 0.0 | 0.0 | 0.0 | 0.0 | 0.0 | 0.0 |
| Wedge school | | 2.6 | 3.1 | 2.9 | 15.0 | 14.2 | 14.0 | 24.6 | 25.0 | 24.7 |
| Total secondary | | 7.0 | 7.5 | 7.6 | 24.0 | 23.5 | 23.8 | 32.3 | 33.5 | 33.6 |
| Leeds all | | 7.7 | 8.0 | 8.0 | 26.4 | 25.7 | 25.9 | 34.8 | 35.9 | 36.2 |

| Data Source: January School Census and CACI ACORN | | | | | | | | | | | DP: S |
|---|-------------|------------|-------------|-------------|-------------|-------------|------------|-------------|-------------|-------------|--------------|
| KEY: Wealthier Achievers(WA), Urban Prosperity (UP), Comfortably Off (CO), Moderate Means (MM), Hard Pressed (HP) | | | | | | | | | | | |
| Percentage of pupils in each ACORN category | 2011 | | | | | 2012 | | | | | |
| | WA | UP | CO | MM | HP | WA | UP | CO | MM | HP | |
| Primary | | | | | | | | | | | |
| Cluster school | 32.1 | 6.1 | 39.9 | 2.0 | 19.6 | 31.9 | 5.7 | 40.3 | 2.5 | 19.4 | |
| Cluster residence | 32.7 | 8.0 | 41.0 | 1.5 | 16.7 | 32.1 | 7.1 | 42.0 | 1.8 | 17.0 | |
| Wedge school | 14.6 | 8.0 | 31.3 | 13.0 | 32.3 | 14.2 | 8.2 | 31.5 | 13.0 | 32.2 | |
| Total primary | 15.4 | 5.9 | 27.8 | 15.8 | 34.3 | 15.0 | 6.0 | 27.7 | 15.9 | 34.6 | |
| Secondary | | | | | | | | | | | |
| Cluster school | 32.9 | 3.9 | 40.5 | 2.1 | 20.3 | 33.5 | 4.1 | 39.4 | 2.5 | 20.3 | |
| Cluster residence | 37.8 | 5.7 | 38.7 | 1.2 | 16.3 | 37.6 | 6.5 | 38.6 | 1.0 | 16.0 | |
| Wedge school | 18.4 | 7.0 | 32.6 | 12.6 | 28.8 | 18.4 | 7.1 | 32.8 | 12.7 | 28.4 | |
| Total secondary | 17.1 | 5.2 | 29.7 | 14.7 | 32.5 | 16.9 | 5.3 | 29.8 | 14.7 | 32.6 | |
| Leeds all | 16.1 | 5.6 | 28.5 | 15.4 | 33.6 | 15.8 | 5.7 | 28.5 | 15.4 | 33.8 | |

| Data Source: DWP information Directorate | | | | | | | | | | | | | DP: F |
|---|------------|-----------|------------|------------|------------|-----------|------------|------------|------------|-----------|------------|------------|--------------|
| KEY: Job Seekers Allowance (JSA), Incapacity Benefit (IB), Lone Parent Benefit (LPB), Total Out of Work (TOW) | | | | | | | | | | | | | |
| Unemployment Percentage of working age people in receipt of: | 2009 | | | | 2010 | | | | 2011 | | | | |
| | JSA | IB | LPB | TOW | JSA | IB | LPB | TOW | JSA | IB | LPB | TOW | |
| Cluster | 2.2 | 3.5 | 0.8 | 6.8 | 2.2 | 3.6 | 0.6 | 6.7 | 2.1 | 3.7 | 0.5 | 6.5 | |
| Wedge | 3.5 | 4.7 | 1.2 | 9.8 | 3.4 | 4.7 | 1.2 | 9.7 | 3.4 | 4.7 | 1.0 | 9.5 | |
| Leeds all | 4.4 | 5.9 | 1.8 | 12.6 | 4.3 | 5.8 | 1.7 | 12.3 | 4.2 | 5.8 | 1.5 | 12.1 | |

| Data Source: AXCIOM Lifestyle Survey 2009-2011 | | | | | | | | | | | | | DP: S | | | | | |
|--|--------------------|------|------|------------------|------|------|------------------|------|-----|--------------------------|------|-----|-----------|------|------|-------------------|------|------|
| | Property type by % | | | | | | | | | Length of residence by % | | | | | | | | |
| | Owned | | | Rented - Council | | | Rented - Private | | | Less than 1 year | | | 2-5 years | | | More than 5 years | | |
| | 09 | 10 | 11 | 09 | 10 | 11 | 09 | 10 | 11 | 09 | 10 | 11 | 09 | 10 | 11 | 09 | 10 | 11 |
| Cluster | 75.2 | 74.5 | 20.0 | 14.7 | 14.9 | 66.9 | 10.0 | 10.6 | 0.1 | 7.4 | 7.6 | 3.6 | 21.6 | 15.5 | 17.2 | 71.0 | 76.9 | 79.3 |
| Wedge | 62.9 | 62.8 | 34.8 | 21.7 | 21.6 | 71.9 | 15.4 | 15.6 | 0.0 | 9.4 | 10.7 | 6.1 | 20.6 | 20.6 | 18.3 | 70.0 | 68.7 | 75.5 |
| Leeds all | 61.5 | 61.6 | 39.0 | 24.0 | 23.9 | 61.2 | 14.5 | 14.6 | 0.0 | 7.9 | 8.1 | 5.1 | 20.3 | 20.0 | 18.5 | 71.9 | 71.9 | 76.4 |
| Income by % | <10k | | | 10-20k | | | 20-30k | | | 30-40k | | | 40-50k | | | 50k+ | | |
| | 09 | 10 | 11 | 09 | 10 | 11 | 09 | 10 | 11 | 09 | 10 | 11 | 09 | 10 | 11 | 09 | 10 | 11 |
| Cluster | 11 | 13 | 14 | 16 | 16 | 18 | 11 | 15 | 9 | 14 | 20 | 23 | 28 | 13 | 15 | 21 | 24 | 21 |
| Wedge | 20 | 17 | 18 | 21 | 20 | 22 | 16 | 16 | 15 | 15 | 17 | 18 | 14 | 11 | 13 | 15 | 19 | 14 |
| Leeds all | 20 | 18 | 18 | 21 | 20 | 23 | 16 | 15 | 16 | 15 | 18 | 17 | 14 | 13 | 13 | 14 | 16 | 14 |
| Struggling with payments by % | Food | | | | | | Bills | | | Mortgage | | | | | | | | |
| | | | | 09 | 10 | 11 | 09 | 10 | 11 | | | | 09 | 10 | 11 | | | |
| Cluster | | | | 13.5 | 10.7 | 1.9 | 8.9 | 11.9 | 3.3 | | | | 0.4 | 1.1 | 1.6 | | | |
| Wedge | | | | 15.4 | 11.1 | 6.2 | 15.2 | 12.6 | 7.5 | | | | 1.7 | 2.0 | 1.6 | | | |
| Leeds all | | | | 15.9 | 10.8 | 6.4 | 16.3 | 13.0 | 8.3 | | | | 2.2 | 2.2 | 1.7 | | | |

Being Healthy

| Data Source: NHS Leeds | | | | | | | | | | DP: Various - Listed with each report | | | | | | | | | | | |
|------------------------|--|-------|-------|---------|-------|-------|---|-------|---------|---------------------------------------|---|-------|---------|---------|---|---------|---------|---------|--|---------|--|
| Birth Data | 3 year rolling average of births below 2.5kg | | | | | | Number and rate of conceptions per 1000 15-17 year olds | | | | | | | | | | | | | | |
| | % low birth weight babies | | | | | | DP: O | | | | Number | | | | Rate | | | | | | |
| | 2006-08 | | | 2007-09 | | | 2008-10 | | | June to May | | | | 2008-09 | | 2009-10 | | 2008-09 | | 2009-10 | |
| Cluster | 5.3 | | | 5.0 | | | 6.6 | | | Cluster | | | | 17 | | 19 | | 29 | | 33 | |
| Wedge | 7.1 | | | 7.1 | | | 6.8 | | | Wedge | | | | 380 | | 355 | | 41 | | 40 | |
| Leeds all | 7.8 | | | 7.8 | | | 7.6 | | | Leeds all | | | | 1220 | | 1145 | | 45 | | 43 | |
| DP: C | % of women receiving a health and social care needs assessment at 12 weeks as a percentage of live births in the same year | | | | | | DP: F | | | | % Initiating breastfeeding April to March | | | | % breastfeeding at 6 weeks April to March | | | | | | |
| | 2009 | | 2010 | | 2011 | | 2009-10 | | 2010-11 | | 2009-10 | | 2010-11 | | 2009-10 | | 2010-11 | | | | |
| Cluster | 85.8 | | 88.1 | | 92.3 | | 88.4 | | 81.4 | | 60.8 | | 53.0 | | | | | | | | |
| Wedge | 83.7 | | 85.7 | | 85.3 | | 69.6 | | 68.0 | | 42.2 | | 40.1 | | | | | | | | |
| Leeds all | 81.6 | | 82.9 | | 84.0 | | 67.6 | | 65.1 | | 40.4 | | 39.3 | | | | | | | | |
| DP: C | Number of emergency admissions by age group 2007-11 | | | | | | Number of emergency admissions to hospital for injury, poisoning and certain other consequences of external causes by age group | | | | | | | | | | | | | | |
| | 0-4 | | 5-10 | | 11-18 | | 0-4 | | 5-10 | | 11-18 | | | | | | | | | | |
| Cluster | 596 | | 130 | | 368 | | 88 | | 40 | | 124 | | | | | | | | | | |
| Wedge | 9185 | | 2518 | | 6030 | | 1108 | | 809 | | 2250 | | | | | | | | | | |
| Leeds all | 29793 | | 8247 | | 18194 | | 3419 | | 2522 | | 6711 | | | | | | | | | | |
| Immunisation Data | % of 2 year olds receiving vaccinations in quarter 3 for: | | | | | | % of 5 year olds receiving vaccinations in quarter 3 for: | | | | | | | | | | | | | | |
| | Diphtheria | | | MMR | | | Diphtheria | | | MMR | | | | | | | | | | | |
| | 09-10 | 10-11 | 11-12 | 09-10 | 10-11 | 11-12 | 09-10 | 10-11 | 11-12 | 09-10 | 10-11 | 11-12 | | | | | | | | | |
| Cluster | 92 | 96 | 98 | 70 | 83 | 89 | 95 | 91 | 98 | 92 | 91 | 96 | | | | | | | | | |
| Wedge | 97 | 97 | 98 | 88 | 90 | 95 | 95 | 93 | 96 | 93 | 90 | 94 | | | | | | | | | |
| Leeds all | 96 | 96 | 97 | 86 | 88 | 94 | 95 | 94 | 96 | 91 | 91 | 95 | | | | | | | | | |

| Data Source: National Child Measurement Programme | | | | | | | | | | | | DP: A | | |
|---|--------------------------|-------|-------|-----------------------|-------|-------|--------------------------|-------|-------|-----------------------|-------|-------|--|--|
| Obesity | Obesity in Reception | | | | | | Obesity in Year 6 | | | | | | | |
| | % Obese | | | % Obese or overweight | | | % Obese | | | % Obese or overweight | | | | |
| | 08-09 | 09-10 | 10-11 | 08-09 | 09-10 | 10-11 | 08-09 | 09-10 | 10-11 | 08-09 | 09-10 | 10-11 | | |
| Cluster | 10.9 | 8.0 | 7.4 | 27.2 | 23.5 | 19.2 | 16.9 | 15.2 | 15.4 | 30.0 | 26.7 | 27.6 | | |
| Wedge | 9.6 | 10.0 | 9.4 | 23.0 | 24.4 | 23.1 | 20.6 | 20.2 | 18.7 | 34.2 | 33.9 | 32.7 | | |
| Leeds all | 9.4 | 10.2 | 9.7 | 21.7 | 23.7 | 23.4 | 20.3 | 20.7 | 20.0 | 34.3 | 35.1 | 34.3 | | |
| Obesity | Obesity in Reception | | | | | | Obesity in Year 6 | | | | | | | |
| | 3 year average 2008-2011 | | | | | | 3 year average 2008-2011 | | | | | | | |
| | % Obese | | | % Obese or overweight | | | % Obese | | | % Obese or overweight | | | | |
| Cluster | 8.68 | | | 23.04 | | | 15.83 | | | 28.16 | | | | |
| Wedge | 9.66 | | | 23.49 | | | 19.88 | | | 33.66 | | | | |
| Leeds all | 9.77 | | | 22.96 | | | 20.32 | | | 34.56 | | | | |

Stay Safe

| Data Source: Children's Services | | | | | DP: Various - Listed with each report | | | | | | |
|---|---|------|---------|------|---------------------------------------|----------------------------|-----------------|-----------------------|--|----------------------|---------|
| Number of LAC and Child protection plans | The number of children and young people looked after by the Local Authority - March based on home address before coming into care | | | | | based on placement address | | | The number of children with child protection plans - March | | DP: S |
| | DP: S | 2011 | 2012 | 2012 | 2011 | 2012 | 2011 | 2012 | 2011 | 2012 | |
| | Cluster | 29 | 26 | 16 | 12 | 13 | Wedge | 0 | 411 | 326 | 0 |
| Leeds all | 1439 | 1454 | 1454 | 947 | 1019 | | | | | | |
| Number of Common Assessments (CAFs) | | | | | Social Care | | | Social Care Referrals | | Requests for Service | |
| DP: C | 2008 | 2009 | 2010 | 2011 | DP:A | 2009 | 2010 | 2011 | DP:S | Feb 11 - Jan 12 | |
| Cluster | 7 | 7 | 15 | 23 | Cluster | 95 | 112 | 161 | | 337 | |
| Wedge | 140 | 243 | 312 | 278 | Wedge | 3813 | 3622 | 3852 | | 8460 | |
| Leeds all | 457 | 849 | 1115 | 892 | Leeds all | 14248 | 13784 | 14000 | | 30539 | |
| Number of Child and Adolescent Mental Health Services referrals | | | | | | | | | | | |
| DP: S | aged 11 and under | | | | aged 12-18 | | total referrals | | | | |
| September-October | 2009-10 | | 2010-11 | | 2009-10 | | 2010-11 | | 2009-10 | | 2010-11 |
| Cluster | 20 | | 17 | | 53 | | 29 | | 73 | | 46 |
| Wedge | 512 | | 362 | | 1054 | | 588 | | 1566 | | 950 |
| Leeds all | 1767 | | 1124 | | 2976 | | 1730 | | 4743 | | 2854 |

Make a positive Contribution

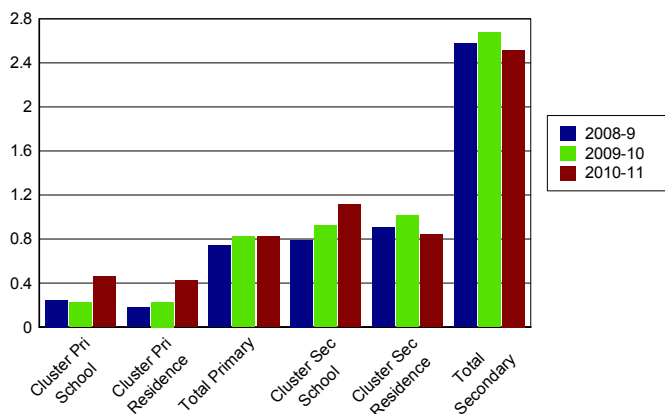
| Data Source: West Yorkshire Police | | | | | | | | | | DP: C |
|--|--|------|--------------------|------|-----------------|-------|-------------------|------|---------------|-------|
| Property Crime Number of recorded crimes for: | Burglary dwelling | | Burglary elsewhere | | Criminal damage | | Robbery | | Vehicle crime | |
| | 10 | 11 | 10 | 11 | 10 | 11 | 10 | 11 | 10 | 11 |
| Cluster | 154 | 189 | 182 | 156 | 209 | 154 | 10 | 7 | 102 | 104 |
| Wedge | 4156 | 4057 | 2127 | 2015 | 4299 | 3249 | 379 | 413 | 2945 | 2637 |
| Leeds all | 9508 | 8487 | 5681 | 5408 | 13599 | 10426 | 1297 | 1226 | 9168 | 7971 |
| Personal Crime Number of recorded crimes for: | | | | | Drug Offences | | Theft from person | | Violent crime | |
| | | | | | 10 | 11 | 10 | 11 | 10 | 11 |
| Cluster | | | | | 7 | 28 | 10 | 6 | 80 | 78 |
| Wedge | | | | | 187 | 934 | 290 | 525 | 2966 | 2712 |
| Leeds all | | | | | 1248 | 3192 | 2235 | 3034 | 11233 | 10896 |
| Domestic Violence Incidents | Number of incidents recorded with a domestic qualifier or disposition code on the Storm WYP incident recording system - 2011 | | | | | | | | | |
| Cluster | 122 | | | | | | | | | |
| Wedge | 3695 | | | | | | | | | |
| Leeds all | 14525 | | | | | | | | | |

| Data Source: Youth Offending Service | | | | | | | | | | DP: A | |
|---|---------------------|----------|-----------------|----------------|----------------------|--------------------|--------------|--------------------|-----------------------------|-------|-------|
| Youth Offending | Number of Offenders | | | | | Number of Offences | | | | | |
| | 07-08 | 08-09 | 09-10 | 10-11 | 07-08 | 08-09 | 09-10 | 10-11 | 07-08 | 08-09 | 09-10 |
| Cluster | 20 | 9 | 12 | 11 | 39 | 17 | 23 | 21 | | | |
| Wedge | 627 | 474 | 334 | 355 | 1616 | 1031 | 732 | 785 | | | |
| Leeds all | 2741 | 2166 | 1522 | 1511 | 6331 | 4883 | 3134 | 3150 | | | |
| April 2010 - March 2011 Number of offences by young offenders | | | | | | | | | | | |
| | Burglary | Breaches | Criminal Damage | Drugs Offences | Motoring and Vehicle | Other | Public Order | Theft and handling | Violence against the person | | |
| Cluster | SUPP | SUPP | SUPP | SUPP | SUPP | SUPP | SUPP | SUPP | 5 | | |
| Wedge | 96 | 68 | 86 | 50 | 62 | 67 | 58 | 171 | 127 | | |
| Leeds all | 291 | 270 | 328 | 204 | 218 | 358 | 282 | 612 | 587 | | |

| Data Source: School Census | | | | | | | | | | | | DP: A | | |
|---|------------|-------|-------|--------------------|-------|-------|----------------------|-------|-------|------------------------|-------|-------|--|--|
| Attendance and persistent absence by percentage | Attendance | | | Authorised Absence | | | Unauthorised Absence | | | Persistent Absence 15% | | | | |
| | 08-09 | 09-10 | 10-11 | 08-09 | 09-10 | 10-11 | 08-09 | 09-10 | 10-11 | 08-09 | 09-10 | 10-11 | | |
| Primary | | | | | | | | | | | | | | |
| Cluster school | 96 | 96 | 96 | 4 | 4 | 3 | 0.2 | 0.2 | 0.5 | 2.4 | 1.8 | 1.7 | | |
| Cluster residence | 96 | 96 | 96 | 4 | 4 | 3 | 0.2 | 0.2 | 0.4 | 2.2 | 1.5 | 1.6 | | |
| Total primary | 94 | 94 | 95 | 5 | 5 | 4 | 0.7 | 0.8 | 0.8 | 5.9 | 5.5 | 4.3 | | |
| Secondary | | | | | | | | | | | | | | |
| Cluster school | 94 | 94 | 94 | 5 | 5 | 5 | 0.8 | 0.9 | 1.1 | 6.2 | 7.7 | 6.3 | | |
| Cluster residence | 94 | 94 | 95 | 5 | 5 | 4 | 0.9 | 1.0 | 0.8 | 7.6 | 7.7 | 5.2 | | |
| Total secondary | 92 | 92 | 92 | 6 | 6 | 5 | 2.6 | 2.7 | 2.5 | 13.0 | 13.1 | 11.2 | | |

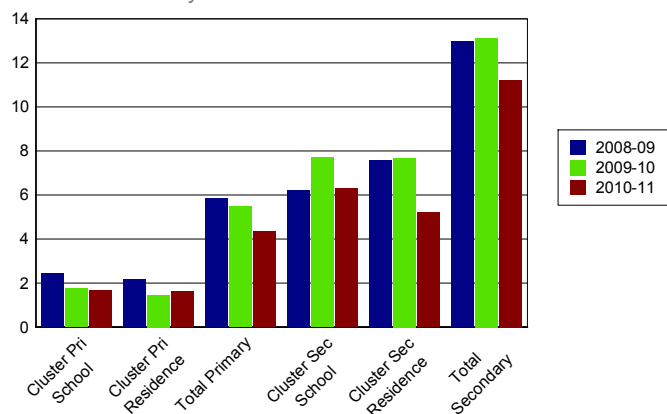
% Unauthorised Absence

2008-2011



% Persistent Absence

by 15% measure 2008-2011



| Data Source: Children's Services | | | | | | | | | | | | DP: A | | |
|----------------------------------|-----------------------|-------|-------|-------------------|-------|-------|----------------------|-------|-------|-------------------|-------|-------|--|--|
| Exclusions | Fixed Term Exclusions | | | | | | Permanent Exclusions | | | | | | | |
| | Number | | | Rate per thousand | | | Number | | | Rate per thousand | | | | |
| Primary | 08-09 | 09-10 | 10-11 | 08-09 | 09-10 | 10-11 | 08-09 | 09-10 | 10-11 | 08-09 | 09-10 | 10-11 | | |
| Cluster school | 10 | 2 | 1 | 6.0 | 1.2 | 0.6 | 0 | 0 | 0 | 0.0 | 0.0 | 0.0 | | |
| Cluster residence | 10 | 2 | 0 | 6.2 | 1.2 | 0.0 | 0 | 0 | 0 | 0.0 | 0.0 | 0.0 | | |
| Total primary | 467 | 371 | 455 | 7.7 | 6.0 | 7.3 | 2 | 2 | 2 | 0.0 | 0.0 | 0.0 | | |
| Secondary | | | | | | | | | | | | | | |
| Cluster school | 37 | 22 | 14 | 26.7 | 15.9 | 10.2 | 1 | 0 | 1 | 0.7 | 0.0 | 0.7 | | |
| Cluster residence | 46 | 41 | 31 | 58.4 | 49.7 | 38.4 | 1 | 2 | 1 | 1.3 | 2.4 | 1.2 | | |
| Total secondary | 4350 | 4286 | 3806 | 93.6 | 93.1 | 83.2 | 52 | 57 | 44 | 1.1 | 1.2 | 1.0 | | |

Enjoy and Achieve

Data Source: Keypas and DFE performance tables
DP: A
Foundation Stage Profile Data The percentage of pupils achieving a good level of development (78+ points overall and 6+ points in all PSE and CCL strands)

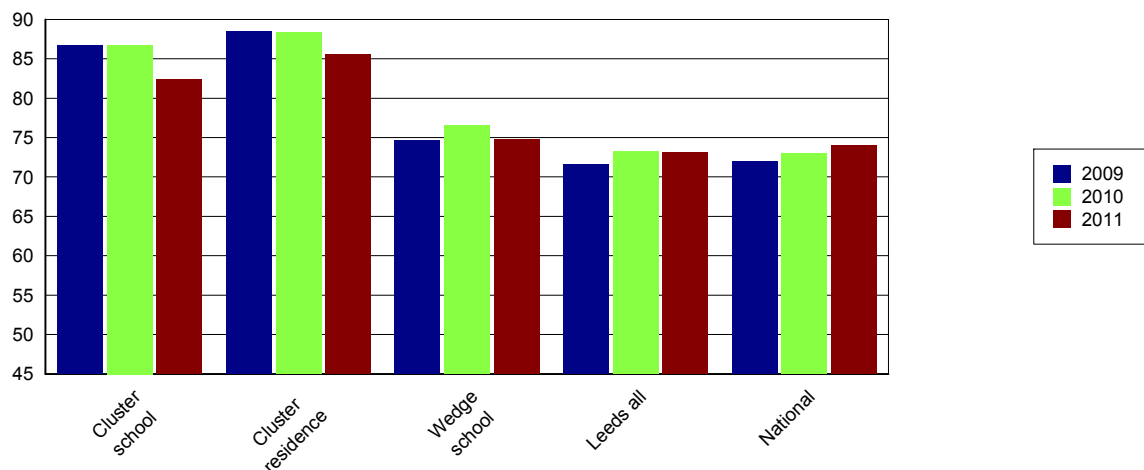
| | 2008 | 2009 | 2010 | 2011 |
|-------------------|------|------|------|------|
| Cluster school | 52 | 74 | 72 | 84 |
| Cluster residence | 51 | 73 | 73 | 86 |
| Leeds all | 47 | 51 | 53 | 58 |

| KS2 Data DP: A | English 4+ | | | English 5+ | | | Maths 4+ | | | Maths 5+ | | | English & Maths 4+ | | |
|-------------------|------------|----|----|------------|----|----|----------|----|----|----------|----|----|--------------------|----|----|
| | 09 | 10 | 11 | 09 | 10 | 11 | 09 | 10 | 11 | 09 | 10 | 11 | 09 | 10 | 11 |
| Cluster school | 93 | 91 | 90 | 45 | 46 | 42 | 89 | 90 | 87 | 53 | 40 | 45 | 87 | 87 | 82 |
| Cluster residence | 93 | 92 | 93 | 50 | 48 | 47 | 91 | 91 | 89 | 58 | 41 | 50 | 88 | 88 | 86 |
| Wedge school | 83 | 82 | 83 | 32 | 34 | 30 | 80 | 82 | 80 | 33 | 33 | 35 | 75 | 77 | 75 |
| Leeds all | 79 | 79 | 81 | 28 | 31 | 32 | 77 | 79 | 78 | 33 | 31 | 32 | 72 | 73 | 73 |
| National | 80 | 80 | 82 | 29 | 33 | 29 | 79 | 79 | 80 | 35 | 34 | 35 | 72 | 73 | 74 |

| KS2 Data - Expected progress | Made 2 levels of progress in English | | Made 2 levels of progress in Maths | |
|------------------------------|--------------------------------------|------------|------------------------------------|------------|
| | Number of pupils | Percentage | Number of pupils | Percentage |
| Cluster school | 181 | 87.9 | 181 | 87.9 |
| Wedge school | 2174 | 88.1 | 2092 | 84.7 |
| Leeds all | 6334 | 88.6 | 6087 | 85.0 |
| National | | 84.0 | | 83.0 |

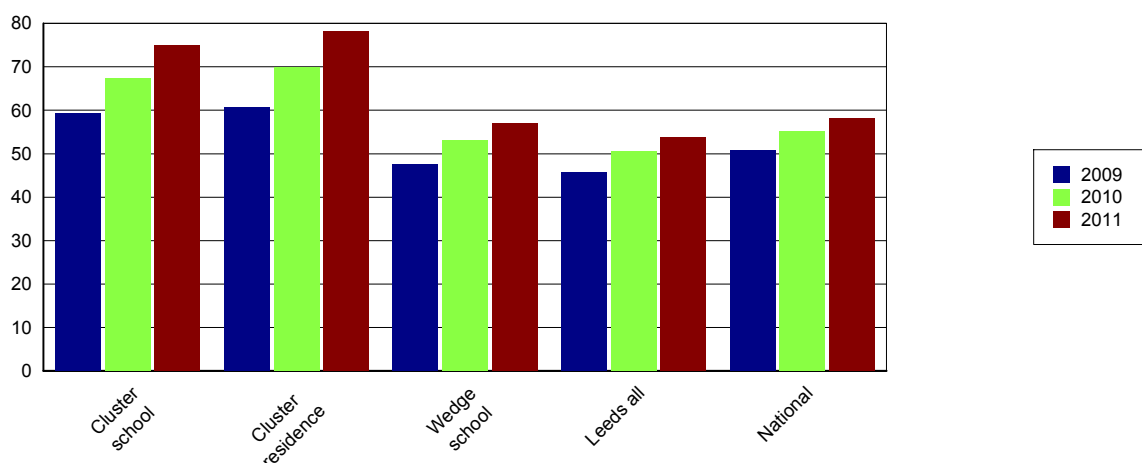
Percentage of English and Maths

Level 4+



| Data Source: EPAS and DFE performance tables | | | | | | | | | | | DP: A | | |
|--|--------------|----|----|------------------------------|----|----|-------------------------|--------------|----|----|-------------------------------|----|----|
| The results are for GCSE & equivalent qualifications. The calculation of achieving no qualifications includes all qualifications | | | | | | | | | | | | | |
| KS4 Data | % of 5+ A*-C | | | % of 5+ A*-C inc Eng & Maths | | | % English Baccalaureate | % of 5+ A*-G | | | % achieving no qualifications | | |
| | 09 | 10 | 11 | 09 | 10 | 11 | | 09 | 10 | 11 | 09 | 10 | 11 |
| Cluster school | 81 | 82 | 90 | 59 | 67 | 75 | 27 | 99 | 99 | 99 | | | 1 |
| Cluster residence | 76 | 80 | 90 | 61 | 70 | 78 | 34 | 95 | 96 | 97 | 2 | 0 | 1 |
| Wedge school | 68 | 75 | 81 | 47 | 53 | 57 | 19 | 92 | 94 | 96 | 1 | 1 | 1 |
| Leeds all | 67 | 76 | 82 | 46 | 51 | 54 | 13 | 91 | 94 | 94 | 2 | 2 | 1 |
| National | 70 | 76 | 81 | 51 | 55 | 58 | 15 | 94 | 95 | 95 | | | 1 |

Percentage 5 A*-C Including English and Maths



Achieve Economic Well Being

| Key: Not in Employment, Education or Training (NEET), In Employment, Education or Training (EET), in Full time Education (FE) | | | | | | | | | | | | | |
|---|---------|----------------|------|------|--------|------|------|--------------|------|------|------|------|-------|
| Data Source: November destination survey | | | | | | | | | | | | | DP: S |
| NEET/FE | | Number of NEET | | | % NEET | | | Number of FE | | | % FE | | |
| | | 2009 | 2010 | 2011 | 2009 | 2010 | 2011 | 2009 | 2010 | 2011 | 2009 | 2010 | 2011 |
| Cluster school | Year 11 | SUPP | SUPP | 7 | SUPP | SUPP | 3 | 200 | 211 | 207 | 89 | 90 | 93 |
| | Year 12 | SUPP | SUPP | SUPP | SUPP | SUPP | SUPP | 142 | 129 | 143 | 97 | 100 | 99 |
| | Year 13 | SUPP | SUPP | SUPP | SUPP | SUPP | SUPP | 108 | 106 | 107 | 90 | 83 | 92 |
| Cluster residence | Year 11 | 6 | SUPP | SUPP | 3 | SUPP | SUPP | 168 | 193 | 168 | 90 | 91 | 95 |
| | Year 12 | SUPP | SUPP | SUPP | SUPP | SUPP | SUPP | 121 | 105 | 126 | 95 | 98 | 98 |
| | Year 13 | SUPP | SUPP | SUPP | SUPP | SUPP | SUPP | 72 | 96 | 89 | 85 | 86 | 94 |
| Leeds all | Year 11 | 646 | 393 | 357 | 8 | 5 | 5 | 6703 | 7194 | 6564 | 80 | 87 | 87 |
| | Year 12 | 132 | 67 | 115 | 3 | 2 | 3 | 3436 | 3476 | 3550 | 90 | 93 | 93 |
| | Year 13 | 121 | 135 | 120 | 5 | 4 | 4 | 2067 | 2350 | 2593 | 78 | 76 | 84 |

| Data Source: Integrated Youth Support Service | | | | | | | | | | DP: O |
|---|--------|-----|--------|------|-----------|------|----------------|------|--|-------|
| 16-18 NEET and EET Nov 2011 to Jan 2012 | NEET | | EET | | Not Known | | Other Activity | | | |
| | Number | % | Number | % | Number | % | Number | % | | |
| Cluster | 16 | 2.9 | 526 | 96.9 | SUPP | SUPP | SUPP | SUPP | | |
| Wedge | 452 | 6.1 | 6860 | 93.0 | 104 | 1.4 | 21 | 0.3 | | |
| Leeds all | 1538 | 7.0 | 20170 | 91.7 | 343 | 1.6 | 58 | 0.3 | | |

Please Note: Leeds totals for 16-18 NEET will not match publicised totals as published totals include a proportion of those whose status has expired